

Jesse Tree Advent Activity

What is Jesse Tree?

Jesse Tree is a way of preparing for Advent by journeying through the stories on Jesus's family tree. Each day of Advent, read a Bible story about someone on Jesus's family tree and hang an ornament symbolizing the story on your Jesse Tree. As you decorate your tree, you'll see how God prepared for Jesus to be born through many generations.

Where does Jesse Tree come from?

The Jesse Tree tradition is rooted in Isaiah 11:1: "A shoot shall come out from the stump of Jesse, and a branch shall grow out of his roots." Jesse was the father of David, Israel's greatest king. And Jesus is descended from the line of David. He is the branch God promised would grow from Jesse's family tree. Each symbol represents a story from within this family tree and a step toward the birth of Jesus.

Jesse Tree Symbols and Bible Stories

Here's a complete list of Jesse Tree symbols and the Bible stories that they represent. There are enough Jesse Tree symbols here to cover each day from December 1 through December 25.

Make your Jesse Tree

Each day of Advent, read a Bible story about someone on Jesus's family tree.

Then hang the Jesse Tree ornament that symbolizes the story on your Jesse Tree. (You can also read daily family devotions or personal devotions that reflect on these stories.)

There are a variety of ways to make your Jesse Tree. Here are a few ideas.

- Choose a tree branch without leaves that has a main branch with lots of smaller branches attached to it. The tree branch should be about two to three feet long. Place

the branch in a bucket of dirt or rocks and cover the bucket with green fabric, felt, or paper.

- Cut a tree with branches from brown felt. Glue it to a piece of green felt, 24" x 36". Glue on small wooden pegs to hang the ornaments. Or attach Velcro® to the backs of the ornaments for attaching to the felt Jesse Tree.
- Make a mobile using a tree branch. Use fishing line to hang the branch from the ceiling. You'll need to make sure the symbols are balanced when you hang them on the branch so that the branch will remain level.
- Just use a Christmas tree. A small tabletop or standing tree can make for a great Jesse Tree. You may even have one in your storage room already!



The Jesse Tree

Symbol: Stump with branch

Scripture: Isaiah 11:1-2



Creation of Humans

Symbol: Globe/Adam and Eve

Scripture: Genesis 1:26-31



The Fall

Symbol: Snake and apple

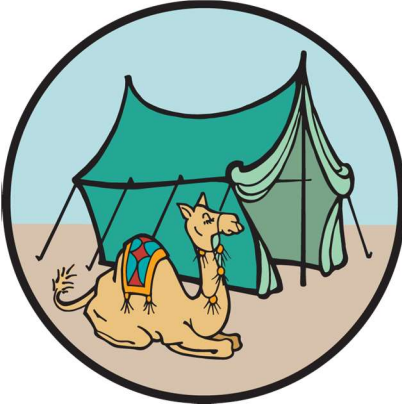
Scripture: Genesis 3



Noah's Ark

Symbol: Noah's Ark

Scripture: Genesis 6:11-14; 7:17-8:3; 9:8-13



The Promised Land

Symbol: Tent and camel

Scripture: Genesis 12:1-7



God's Promise to Abraham

Symbol: Starry sky

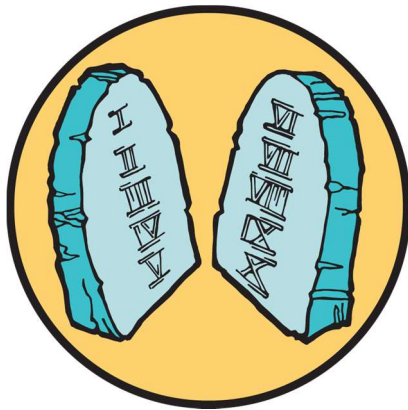
Scripture: Genesis 15:1-6



Joseph

Symbol: Joseph's coat of many colors

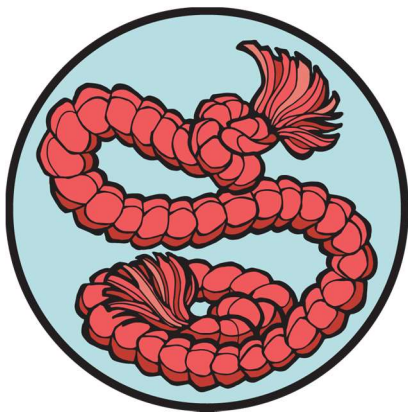
Scripture: Genesis 37:1-36



The 10 Commandments

Symbol: Tablets

Scripture: Deuteronomy 5:1-22



Rahab

Symbol: Red rope

Scripture: Joshua 2:1-21



Ruth and Boaz

Symbol: Grain

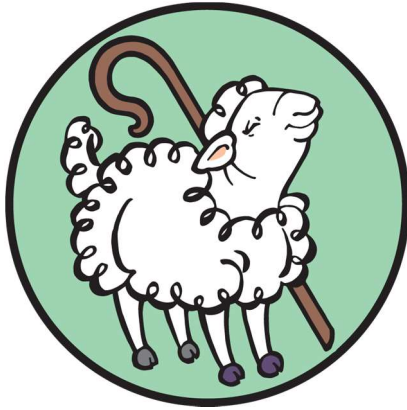
Scripture: Ruth 2:1-4:12



God Chooses David to be King

Symbol: Crown

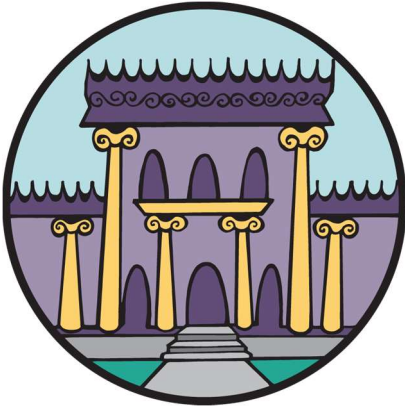
Scripture: 1 Samuel 16:1-15



David the Shepherd-King

Symbol: Sheep/shepherd's crook

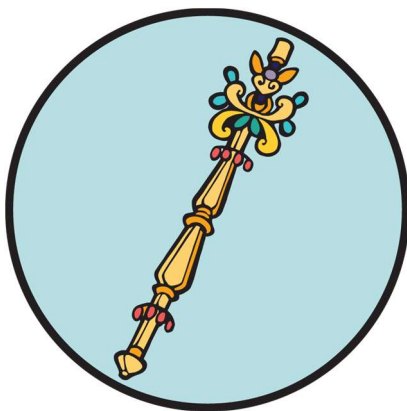
Scripture: 2 Samuel 5:1-5



Solomon Builds God's Temple

Symbol: Temple

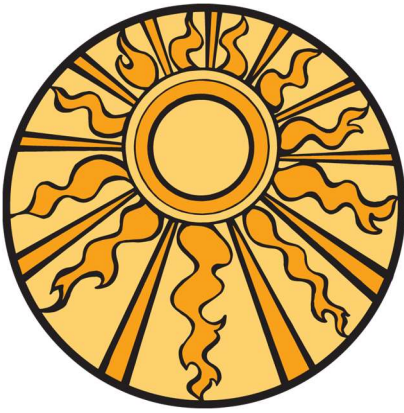
Scripture: 1 Kings 5:5; 1 Kings 6



Esther Saves Her People

Symbol: Scepter

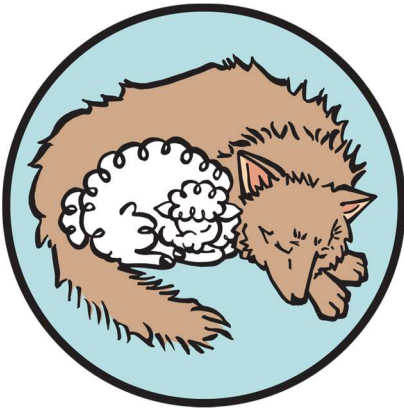
Scripture: Esther 4



Isaiah's Prophecy of a Savior

Symbol: Sun

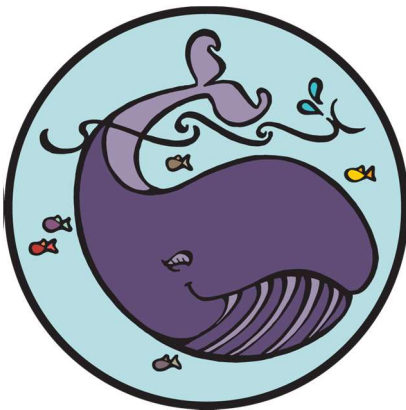
Scripture: Isaiah 9:2-7



Isaiah's Prophecy of the Second Coming

Symbol: Wolf and lamb

Scripture: Isaiah 11:6-9



Jonah and the Whale

Symbol: Whale

Scripture: Jonah 3:1-5



Daniel and the Lions' Den

Symbol: Lion

Scripture: Daniel 6



Prophecy of a Savior Born in Bethlehem

Symbol: City of Bethlehem

Scripture: Micah 5:1-5



Elizabeth and Zechariah

Symbol: Praying hands

Scripture: Luke 1:5-25



John the Baptist

Symbol: Baptism shell

Scripture: Matthew 3:1-6



God Chooses Mary

Symbol: Virgin Mary

Scripture: Luke 1:26-38



Angel Appears to Joseph

Symbol: Angel of the Lord

Scripture: Matthew 1:18-25



Mary and Joseph Go to Bethlehem

Symbol: Sandals

Scripture: Luke 2:1-5



Jesus Is Born

Symbol: Baby in manger

Scripture: Luke 2:6-21